



# SFC Environmental Technologies Private Limited

Economic and Social Impact  
2024



# Table of Content

03

About SFC

07

Key Highlights

09

Economic Impact

13

Social Impact



## About SFC Environmental Technologies

Founded in 2005, SFC Environmental Technologies Private Limited ("SFC") is a leading environmental technology company. SFC specializes in advanced solutions for wastewater and solid waste treatment. With over 1000 plants globally, SFC provides cost-effective and efficient environmental solutions. The company plays a significant role in climate change mitigation through several innovative approaches. It offers advanced solutions for wastewater and solid waste treatment.

SFC's key technologies include C-Tech for single-step sewage treatment and water recycling, and OREX for separating biodegradable organics from inorganics. It also provides solar sludge drying and turbo blowers for sustainable environmental management. SFC has several subsidiaries across India, Austria and the Czech Republic focusing on various environmental solutions. Pentagon Biofuel Private Limited, established in April 2023, converts agricultural waste into energy. SFC Umwelttechnik specializes in advanced environmental technologies, while Chavare Engineering provides related engineering services.

The Solid Waste Management Facility (SWMF) in Saligao, Goa, is one of the notable projects by SFC recently. This facility is managed by Hindustan Waste Treatment Private Limited (HWTPL), processing up to 250 tones of waste daily, converting it into valuable resources like electricity. The facility stands as a model for sustainable waste management, showcasing how innovative technology and effective management can transform waste into valuable resources.

## SFC Group Overview

### Subsidiaries



- Navitas Waste Treatment Pvt. Ltd.
- Pentagen Biofuels Pvt. Ltd.
- SFC Umwelttechnik GmbH
- SFC Ekotechnika S.r.o
- Hindustan Waste Treatment Pvt. Ltd.
- Vasudha Waste Treatment Pvt. Ltd.
- Chavare Engineering Pvt. Ltd.
- Fine Aeration Systems Pvt. Ltd.

### Associate Companies

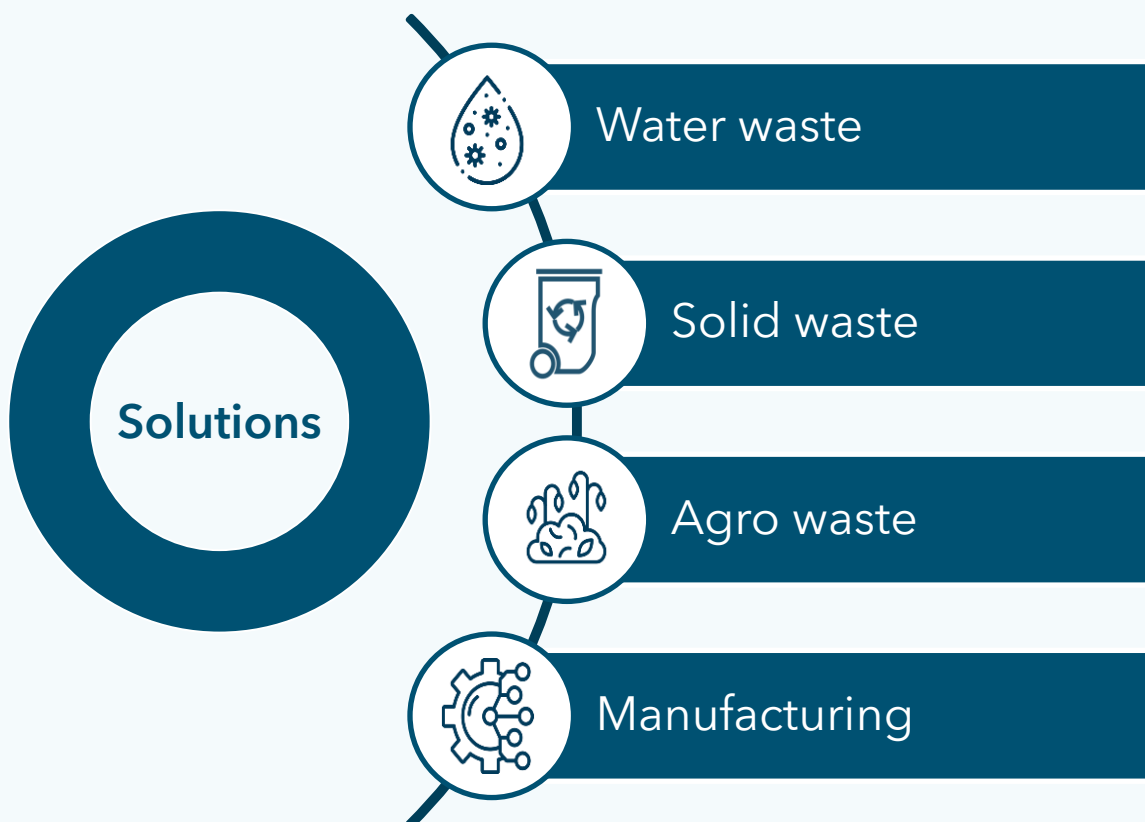


- Turbomax India

### Joint Venture



- Endress + Hauser & Chavare Engineering (JV) Pvt. Ltd.



## Key technologies at play

**Cyclic  
Activated  
Sludge  
Technology  
(C-Tech)  
Sequential  
Batch  
Reactor (SBR)**

SFC's C-Tech SBR is a cutting-edge technology designed for the biological treatment of sewage. This system treats wastewater in a single step, producing high-quality recycled water.

**Organic  
Extraction  
Technology  
(OREX)**

SFC's OREX technology is designed to separate biodegradable organics from inorganic materials in mixed municipal waste. This process enhances biogas production and reduces challenges in digesters





## Geographic presence in India

### Maharashtra & Goa

- Vashi (HO)
- Taloja
- Jalgoan
- Vasco

### Gujarat

- Singanpore
- Pirana
- Kapurai

### Madhya Pradesh

- Indore
- Dewas
- Morena

### Punjab

- Jalandhar

### Haryana

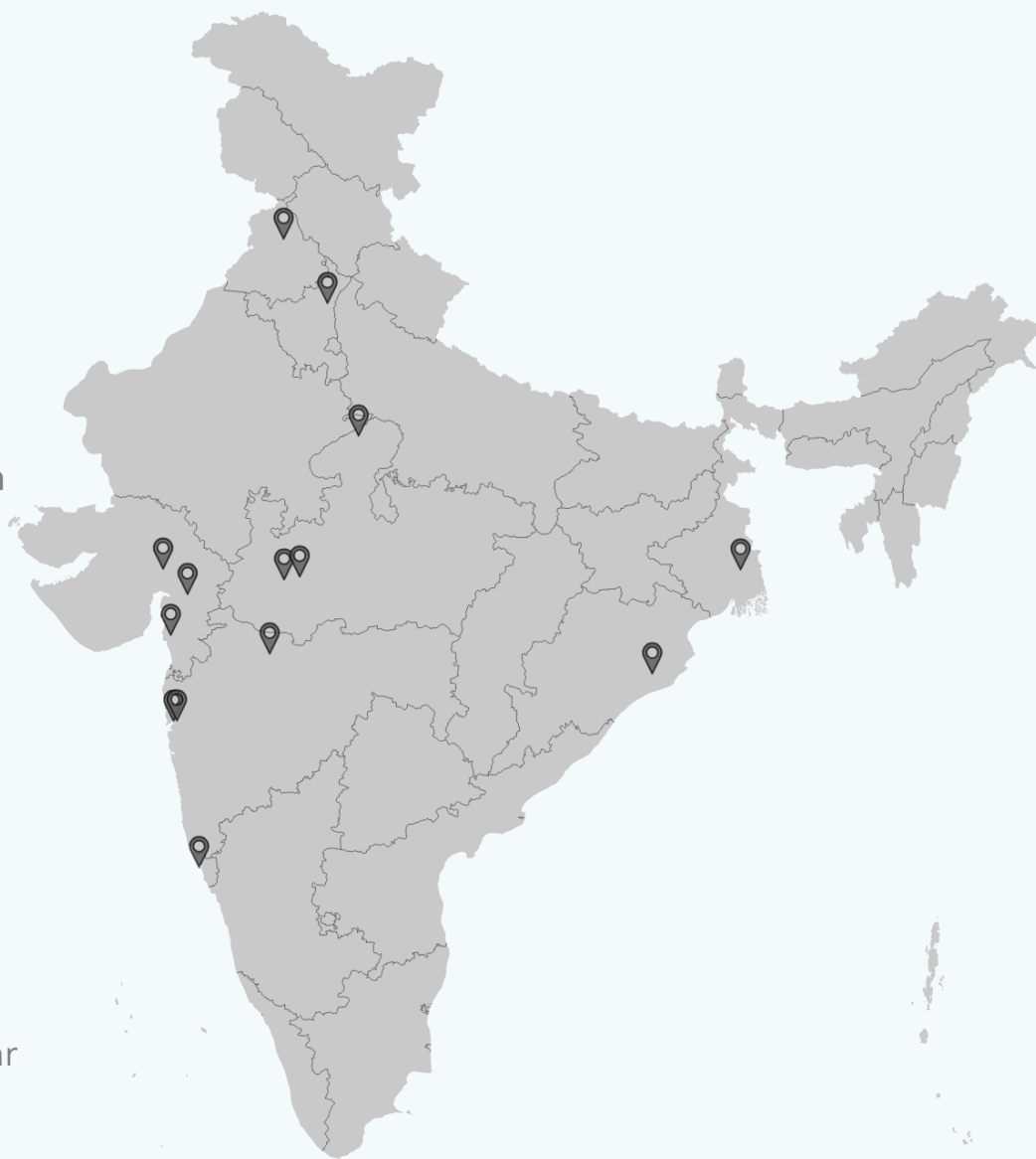
- Karnal

### Orissa

- Bhubaneshwar

### West Bengal

- Barrackpore



*Disclaimer: This map is for illustrative purposes and does not imply the expression of any opinion on the part of D&B, concerning the legal status of any country or territory or concerning the delimitation of frontiers or boundaries.*



## Key highlights



**₹8,093 million** GVA in FY24

**580+** Completed Projects



**₹ 21,348 million** output in FY24

**12.2 billion liters** of water treated daily



**₹18 million** CSR spend in FY24

**350 Tons** solid waste treated daily



**97%** of energy consumed via renewables

**70%** of solutions support water efficiency\*



*\*defined as % of revenue that help reduce, reuse, or recover water, directly or indirectly*

SFC processes 4,453 billion liters of water annually, more than 50% of Nagarjuna Sagar Dam's gross storage capacity, the world's largest and highest masonry dam





# Economic Impact

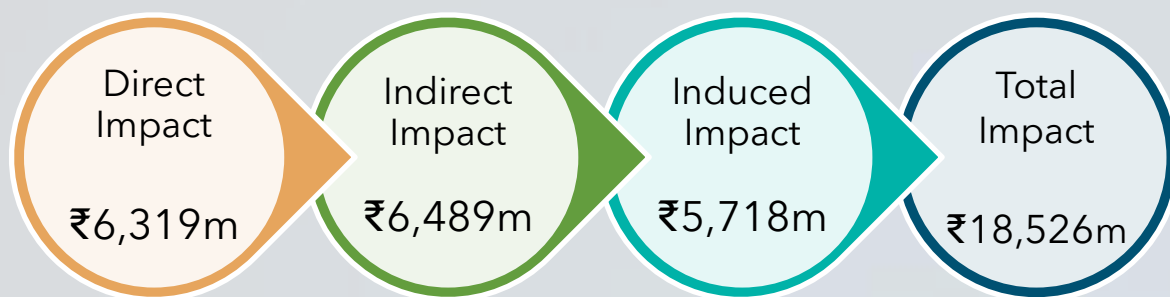
## Impact on Gross Value Added (GVA)

SFC generated a GVA of **₹18,526 million** for the economy over the last three years. This contribution emanates from three distinct avenues. Firstly, a direct impact stemming from core operations amounted to **₹6,319 million**, encompassing profit generation and the creation of income streams for employees.

Secondly, an indirect impact resulting from the procurement of goods and services from various suppliers yielded an additional **₹6,489 million**. Indirect GVA reflects the ripple effect of the company's operations on the broader economy, including economic activity generated in related industries due to the company's demand for inputs and services.

Thirdly, an induced impact, driven by the company's employees through their consumption expenditures, amounted to **₹5,718 million**. This represents the economic value created when employees spend their incomes on housing, groceries, transportation, and other expenses within the local or regional economy, capturing the multiplier effect as spending circulates through the local economy, creating additional economic value.

SFC's GVA contribution grew by **62.7%** from ₹4,973 million in FY22 to ₹8,093 million in FY24.



## Productivity Levels

In FY24, SFC generated a direct GVA of **₹2,760 million** with an employee base of ~200 people. This results in an average per capita GVA of **₹13.8 million**, notably higher than India's average per capita GVA of approximately ₹0.18 million. This indicates that, on average, a SFC employee generates GVA at a rate **77 times** that of an average citizen. By leveraging advanced technologies like the C-Tech Sequential Batch Reactor (SBR) for waste treatment, SFC has shortened its time to market by 25% and reduced design errors by 40% demonstrating improved operational efficiency. The adoption of advanced technologies like 3DEXPERIENCE Works for design and data management has improved the efficiency and effectiveness of SFC's operations.

## Impact on Income

Over the last 3 years, SFC facilitated an earnings generation of **₹3,865 million** across the nation. While it directly helped its employees generate earnings of **₹1,532 million**, it indirectly helped another **₹1,289 million** for people engaged in its supply chain. The inducted impact created an additional **₹1,044 million**. In FY24, SFC directly helped its employees generate earnings of ₹600 million. With an employee base of ~200, the average per capita earnings generation stood at around **₹3,000,000**.

## Impact on Employment

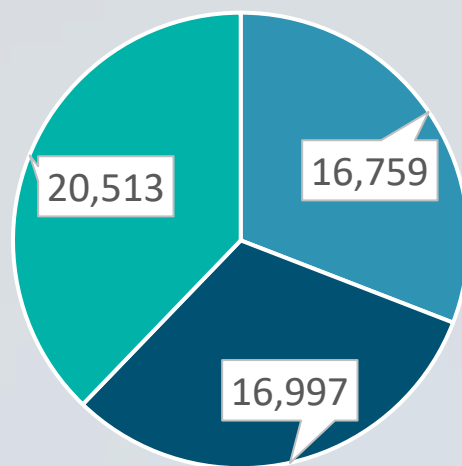
In FY24, SFC employed around **~1000** jobs across India, of which it provided direct employment to **~200** people, and indirect employment to **~300** people involved in its supply chain. Additionally, the ripple effect extended to **~500** jobs, sustained by consumption expenditure of its employees.

## Impact on Output

Over the last three years, SFC has played a role in generating around **₹54,250 million** in economic activity. Beyond its direct revenue of approximately **₹16,759 million**, the company facilitated an additional **₹16,997 million** in

indirect output within its supply chain and contributed to an induced output generation of **₹20,513 million**. SFC has diversified into related business lines, including solid waste treatment and agro-waste energy, contributing to a solid revenue stream.

**Output (In ₹million)**



■ Direct ■ Indirect ■ Induced

## Employee Upskilling

SFC is dedicated to upskilling its employees, particularly in the realm of environmental technologies. This commitment is evident through their comprehensive training and development programs, which focus on enhancing employees' expertise in sustainable practices and cutting-edge environmental solutions. These programs cover a wide range of topics, including advanced waste treatment technologies, water and wastewater management, and the latest innovations in recycling and resource recovery. By staying at the forefront of technological advancements, SFC ensures that its workforce is well-equipped to tackle the complex challenges of modern waste management.



# Social Impact

## Sustainable water management and environmental stewardship

SFC envisions a future where environmental responsibility and cutting-edge technology harmoniously coexist, contributing to a sustainable and prosperous world. SFC has made significant strides in water treatment and conservation through their advanced technologies. SFC processes **12.2 billion liters** of water daily, which is equivalent to **3 times** the daily water requirement of Mumbai. This translates to **4,453 billion liters** of water annually, **more than 50% of Nagarjuna Sagar Dam's gross storage capacity**, the world's largest and highest masonry dam. SFC prevents **150,000 kiloliters** of water from flooding communities or entering local waterways, an amount that is **7.5 times** greater than SFC's total freshwater consumption. Further, SFC generates **1762.56 MT** of organic compost via sludge dewatering using STT conveyor. The resulting compost is rich in organic matter and nutrients, making it an excellent soil amendment for agriculture and landscaping. In addition to this, SFC has pledged to **plant one million trees annually** in collaboration with local communities and environmental groups.

## Contribution to cleaner and healthier communities

SFC is a leader in sustainable waste management solutions. SFC handles **350 tons of solid waste per day** using advanced technologies designed to maximize efficiency and environmental benefits. SFC successfully treats **128,000 tons of solid waste annually**, making a substantial impact in India's waste management efforts. SFC generates around **34,563 Gigajoules** of energy with the biogas generated during the waste treatment process. This amount is equivalent to the energy consumption of several thousand households annually. Also, this initiative not only powers the facility but also contributes to the local grid, promoting sustainable energy solutions. SFC promotes carbon offsetting initiatives such as recycling and resource recovery to help reduce the carbon emissions associated with waste disposal and raw material extraction. In April 2023, SFC formed a subsidiary, Pentagon Biofuel Private Limited, to focus on converting agro waste into energy. This initiative uses multiple feedstocks to produce biofuel, contributing to a circular economy.



SFC currently produces more energy than it consumes and plans to increase renewable energy output by 25% in the next five years. They aim to make all solid waste treatment facilities carbon-neutral.

SFC collaborates with partners and suppliers who share their commitment to environmental stewardship. This collaboration ensures that their operations and supply chains are aligned with sustainability goals. SFC also involves local schools, NGOs, and volunteers in tree-planting activities, fostering a sense of community and environmental stewardship. This initiative will help sequester significant amounts of carbon dioxide, contributing to climate change mitigation.

SFC has also partnered with Swami Swaroopanand Seva Mandal, an NGO in Pawas, Maharashtra, to improve healthcare for underserved communities. Their **"Doctor at Your Door"** program offers free medical services to about **20,000 to 22,000 patients** each year, supported by a team of doctors, compounders, and support staff. They also conduct 5 to 6 specialized health camps annually. Additionally, the NGO produces Ayurvedic medicines from local herbs, benefiting over **12,000 people**, especially those with chronic conditions.

## SFC's key commitments to sustainability



**Water Access** - Providing 10 million liters of safe drinking water annually to underserved communities and developing low-cost purification technologies.



**Tree Planting** - Planting 1 million trees annually with local communities and NGOs to enhance biodiversity and reduce carbon.



**R&D Investment** - Allocating 10% of annual revenue to improve water treatment technologies, focusing on resource recovery and zero waste discharge.



**Plastic Reduction** - Reducing single-use plastic by 90%, using sustainable furniture, and improving waste management in offices and plants.



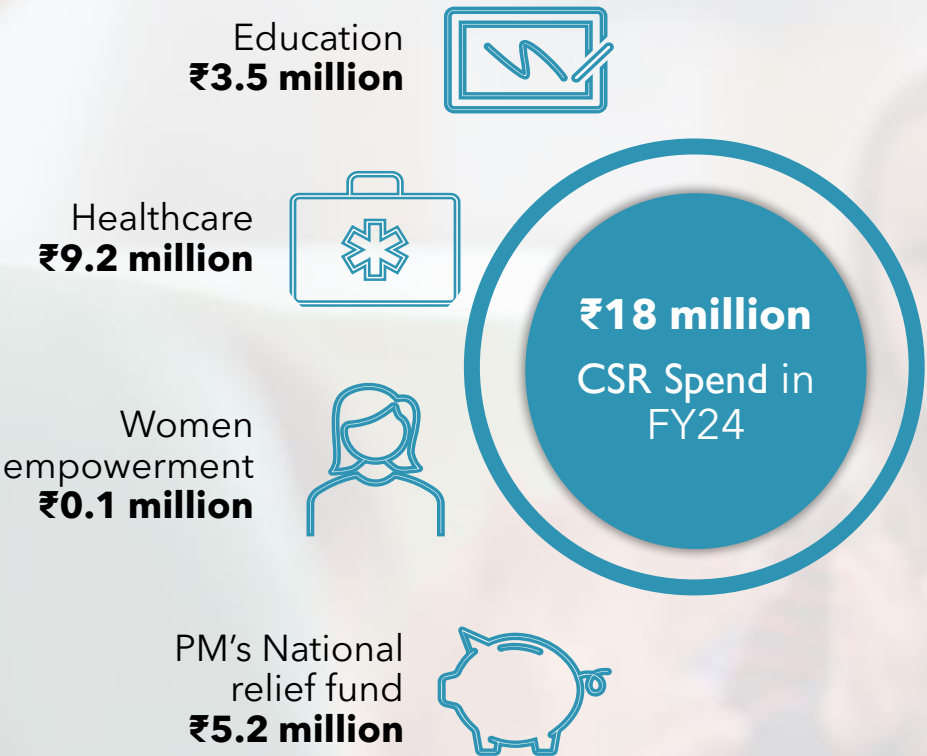
**Waste Treatment** - Enhancing solid waste treatment efficiency, converting waste into biogas, and contributing to renewable energy generation.



**Resource Tracking** - Meticulously tracking resource use, including electricity, water, and carbon emissions, with regular audits for transparency.



# Sustainable practices and community engagement



SFC is actively engaged in Corporate Social Responsibility (CSR) activities that align with their mission of promoting sustainability and environmental stewardship. SFC conducts educational programs and workshops in schools and communities to raise awareness about environmental issues and sustainable practices. These initiatives aim to empower individuals with the knowledge to make eco-friendly choices in their daily lives.

SFC organizes regular clean-up drives in local communities, parks, and beaches. These events not only help in maintaining cleanliness but also foster a sense of community and collective responsibility towards the environment. SFC encourages its employees to participate in volunteer activities that benefit the community. This includes tree planting, environmental education, and participating in local sustainability projects.

SFC collaborates with local NGOs, schools, and government bodies to implement and support various environmental projects. These partnerships enhance the impact of their initiatives and foster a collaborative approach to sustainability. SFC encourages its employees to volunteer in community service activities. This not only helps in community development but also strengthens the company's culture of social responsibility. The company runs public awareness campaigns to highlight important environmental issues and promote sustainable practices. By engaging with communities through these initiatives, SFC is making a tangible impact on local environments and fostering a culture of sustainability.



## About Dun & Bradstreet:

Dun & Bradstreet, a leading global provider of business decisioning data and analytics, enables companies around the world to improve their business performance. Dun & Bradstreet's Data Cloud fuels solutions and delivers insights that empower customers to accelerate revenue, lower cost, mitigate risk and transform their businesses. Since 1841, companies of every size have relied on Dun & Bradstreet to help them manage risk and reveal opportunity.

Dun & Bradstreet Information Services India Private Limited is headquartered in Mumbai and provides clients with data-driven products and technology-driven platforms to help them take faster and more accurate decisions across finance, risk, compliance, information technology and marketing. Working towards Government of India's vision of creating an Atmanirbhar Bharat (Self-Reliant India) by supporting the Make in India initiative, Dun & Bradstreet India has a special focus on helping entrepreneurs enhance their visibility, increase their credibility, expand access to global markets, and identify potential customers & suppliers, while managing risk and opportunity.

India is also the home to Dun & Bradstreet Technology & Corporate Services LLP, which is the Global Capabilities Center (GCC) of Dun & Bradstreet supporting global technology delivery using cutting-edge technology. Located at Hyderabad, the GCC has a highly skilled workforce of over 500 employees, and focuses on enhanced productivity, economies of scale, consistent delivery processes and lower operating expenses.

**Visit [www.dnb.co.in](http://www.dnb.co.in) for more information.**

### **Disclaimer**

*This Report is prepared exclusively for Economic and Social Impact Assessment of SFC Environmental Technologies Private Limited. D&B shall not be responsible for any consequence entailing the usage of the Analysis by any parties other than the Customer for any purpose other than that mentioned in the Order. The Report is prepared keeping in view the scope of work and is subject to the caveat forming part of the Report. No representation is made by D&B that the Analysis contained in the Report is exhaustive or includes all such material information. D&B does not make any further express or implied representation or warranty or assume any responsibility or liability in respect of the Report or arising in connection with or as a consequence of, any decision made or action taken, by the Customer or any other party. D&B assumes that the documents submitted to it by the Customer in connection with any particular issue are the only documents relating to such issue. Analysis provided in the Report is also based on assumptions as to the prevailing rules and regulations of statutory authorities, prevailing conditions on the date of inspection and best judgment of the persons engaged in the preparation of the Report.*